



PROJECT PROFILES

U.S. ARMY | U.S. AIR FORCE | TEXAS



JOINT BASE SAN ANTONIO-RANDOLPH

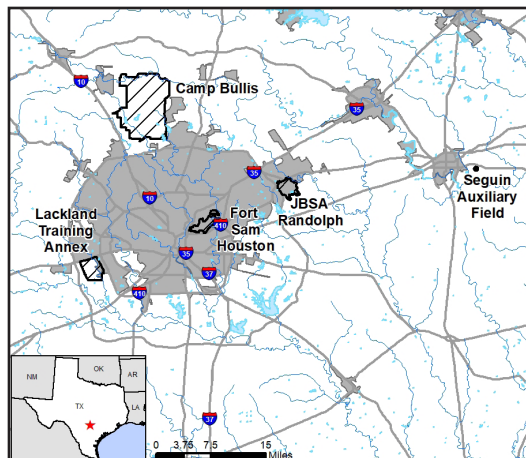
Centrally located between U.S. coastlines, Joint-Base San Antonio (JBSA) is comprised of four primary locations: Randolph (RND), Fort Sam Houston, Camp Bullis, and Lackland.

For the past six years, JBSA-RND has been the busiest airport in the Air Force and is the only Air Force installation with dual simultaneous instrument approaches. Over 1,000 student pilots complete training at JBSA-RND each year, but JBSA-RND is susceptible to significant encroachment challenges due to its placement in one of the fastest growing regions in the country.

In the past years, multiple new residential communities have been planned within JBSA-RND's Accident Potential Zones (APZ). This area, which is already considered high-risk for aircraft bird strikes, would become more densely populated leading to the potential halt of T-38 flight operations—30 percent of the JBSA-RND flying mission. By expanding

the installation boundary buffer through the purchase of priority land, more of the current T-38 noise contour would be included and future operations and training missions would be preserved.

JBSA will continue to organize via three different Installation Encroachment Management Teams (IEMTs) to support the geographically separated locations at JBSA RND, Lackland, and Camp Bullis. These teams will continue to serve as a focal point for all development



requests from local municipalities. JBSA has plans to accelerate efforts with public-public and public-private partnerships in order to strengthen community engagement; ultimately enhancing community relations, highlighting the military's value to the communities and supporting mission sustainment.

BENEFIT SUMMARY

COMMUNITY

- Protects agricultural lands
- Protects water resources

MILITARY

- Improves operational safety
- Ensures that existing compatible areas remain compatible
- Prevents workarounds that would have otherwise limited training capacity
- Ensures the ability to conduct operations and training activities



The JBSA-Randolph Tower is the headquarters for the 12th Flying Training Wing (top). T-38 "White Rocket" is on display in front of the 12th Flying Training Wing Headquarters at JBSA-Randolph (bottom).

KEY PARTNERS

- Compatible Lands Foundation
- Green Spaces Alliance
- Bexar County

CONTACT

COMMUNITY INITIATIVES MISSION
SUSTAINMENT OFFICE:
(210) 652-2144

FAST FACTS FROM FY 2019 THROUGH FY 2024 | Project Status: In Progress

Authority	Transactions	Acres Protected, Managed, or Improved	Total Funds Expended
10 U.S.C. § 2684a	20	467	\$16.0 million

Subtotals may not sum to combined totals due to rounding